

G.SKILL Phoenix III SSD Firmware Update Procedure

Intended for:

- FM-25S3-120GBP3
- FM-25S3-240GBP3

Release Notes:

Firmware Rev. GS505 (11/22/2012)

- Fixed an issue that could have caused the read thresholds to be artificially low during read disturb operations
- Fixed an issue that could have caused the drive to be unresponsive based on a flash program failure
- Fixed the support of Device Statistics in Read Log Extended

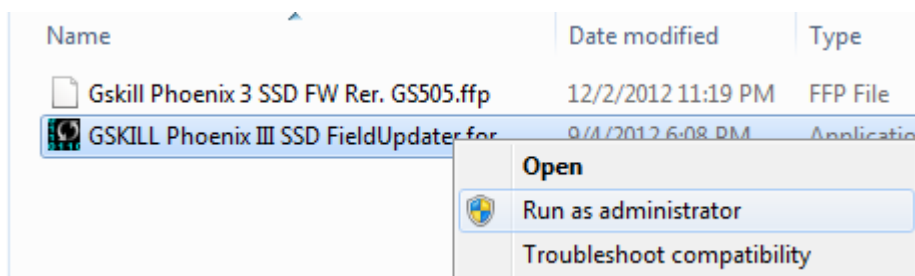
Update Preparations:

- Just in case, please backup of all data to ensure no data is lost during the firmware update process.
- Windows 7, Vista SP2, or XP SP3 in AHCI mode is required for this firmware update to function properly.
- AMD users must use the Microsoft AHCI driver to successfully complete the firmware update process.
- DO use only native SATA ports to perform upgrade. DO NOT use third party controllers.
- DO NOT unplug power at any time during the firmware update process.
- For notebooks, netbooks, and laptops, please fully charge the battery or use AC power to prevent any power loss during the firmware upgrade process.

Step 1: Launch the Firmware Update Utility

Please locate the downloaded file, double-click the zip file, and extract it to a specified location of your choosing. There are three files: the update utility, the instructions in .pdf, and the firmware file.

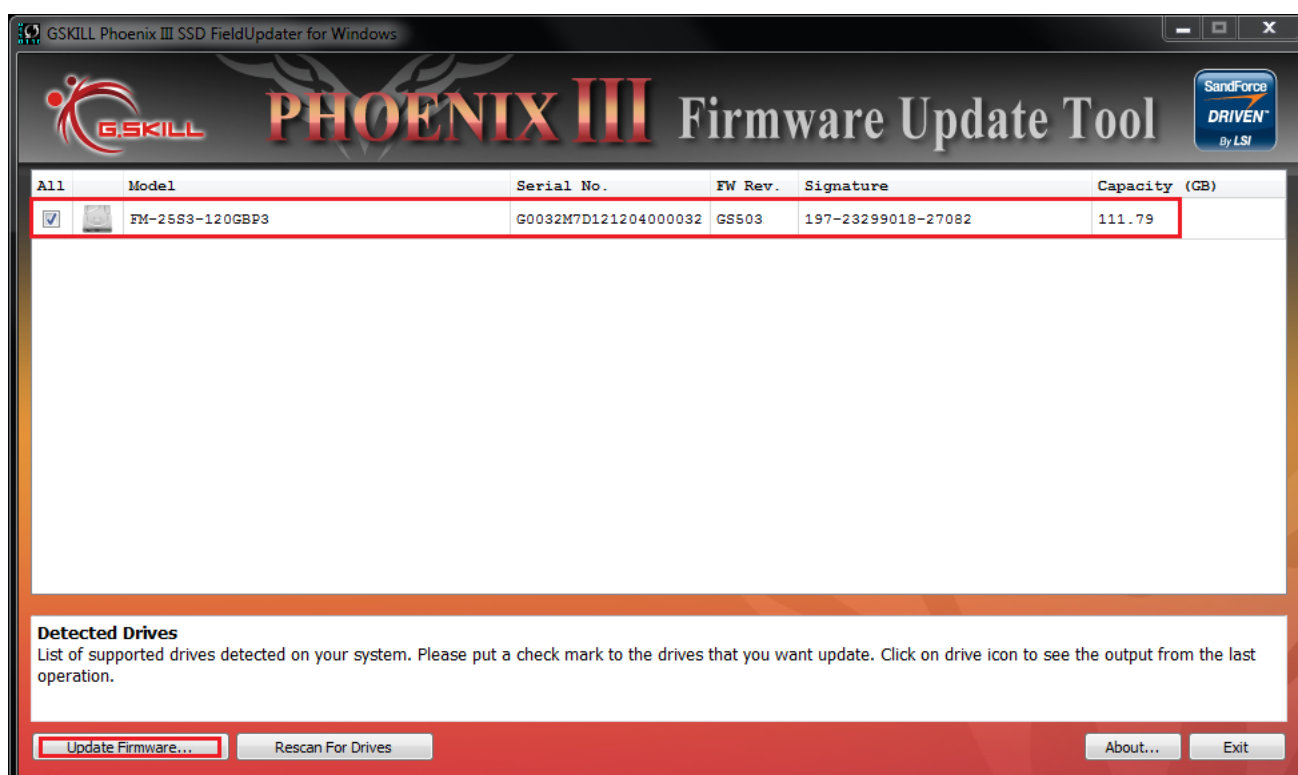
If you are using Windows Vista SP2 or Windows 7, please right-click the **GSKILL Phoenix III SSD FieldUpdater for Windows** and select “**Run as administrator**” to launch the update utility.



If you are using Windows XP SP3, please double-click the **GSKILL Phoenix III SSD FieldUpdater for Windows** to continue.

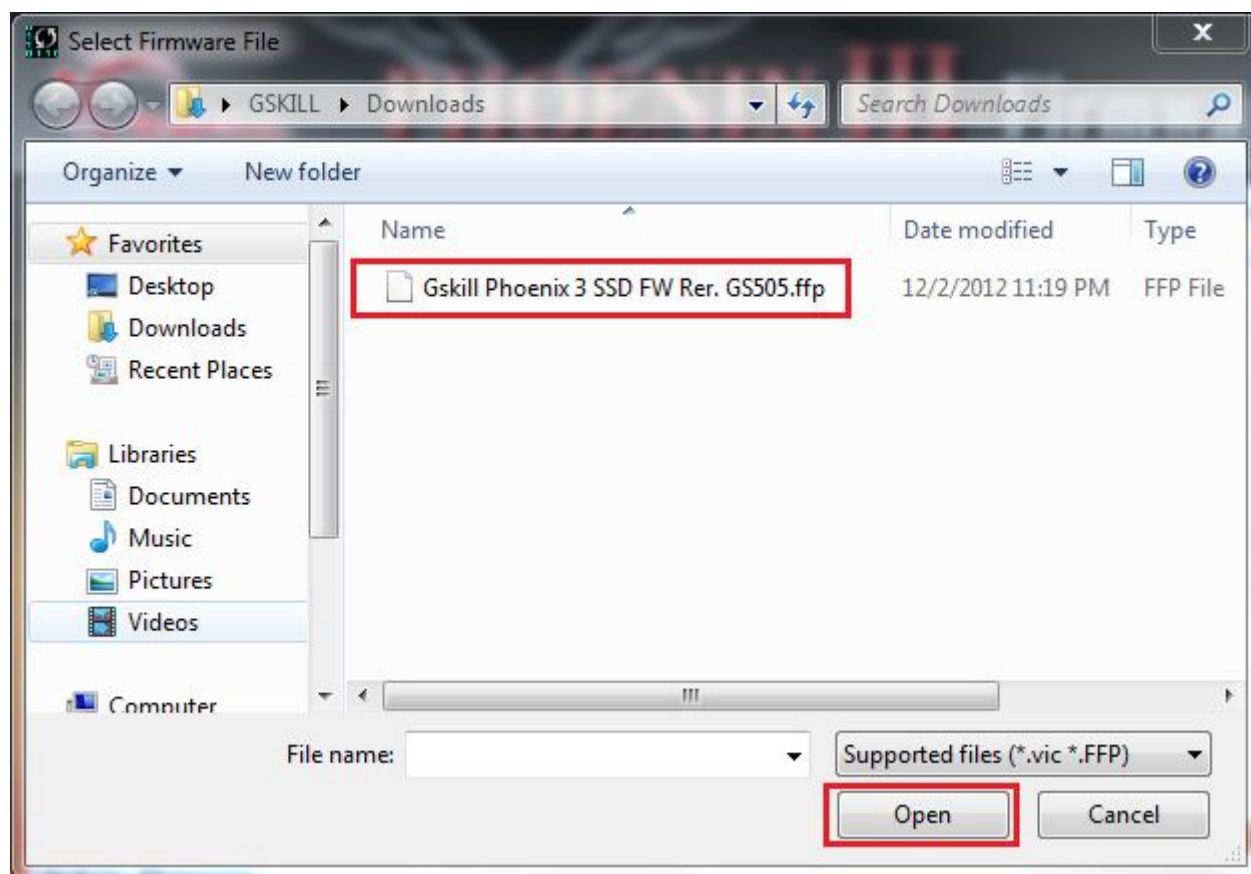
Step 2: Select the SSD drive

Please check the selection box next to the SSD drive you wish to update. (If you are updating multiple drives, please update one at a time.) Once you have selected the drive you wish to update, click on the “Update Firmware” button in the bottom left corner of the Firmware Update Utility.



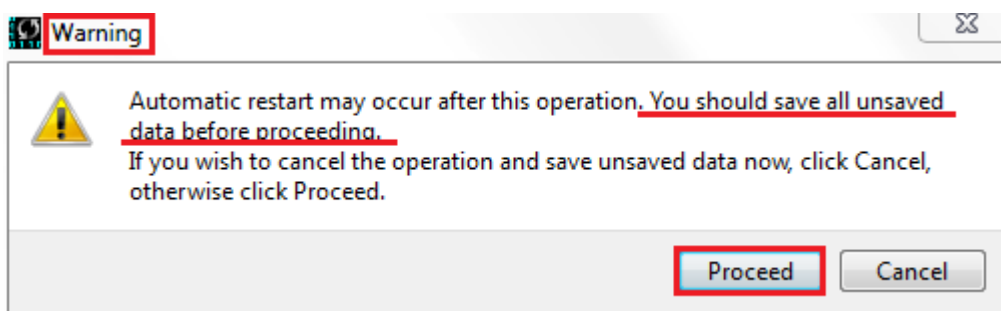
Step 3: Locate the firmware update file

You will be asked to select the firmware file. Please locate the file in the previously specified location, where your files are extracted, and then select the firmware update file. Once selected, please click “Open”.



Step 4: Warning message

If your data has not been backed up, as suggested in the “Update Preparations” section, please cancel the update, back up your data, and then repeat Steps 1-3. If your data has been backed up, please click on “Proceed” to continue the firmware update.



Step 5: Update firmware

The firmware update process should take less than 30 seconds to finish. If the firmware update is successful, there will be a green check next to the model number.

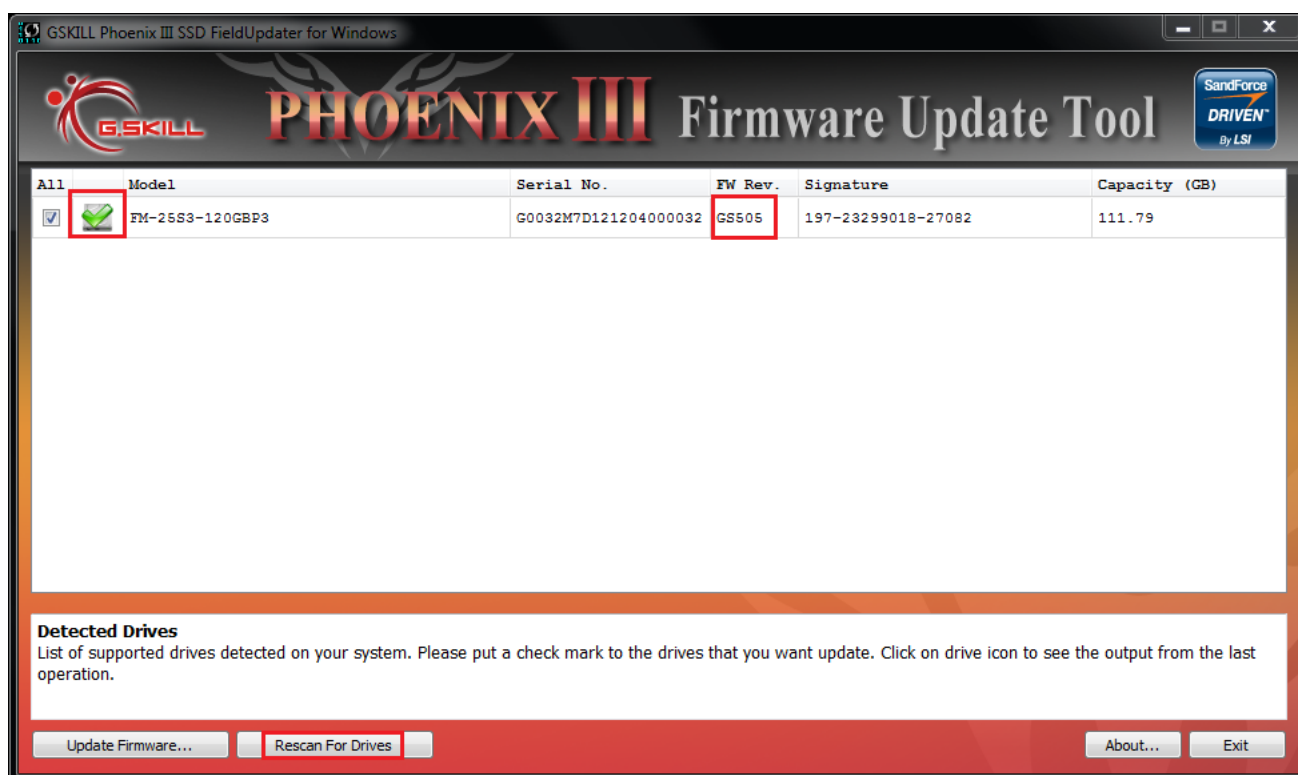


The screenshot shows the Phoenix III Firmware Update Utility window. At the top, there is a G.SKILL logo and the text "PHOENIX III". Below this is a table with columns: "All", "Model", and "Serial No.". The first row shows a checked box under "All", a green checkmark icon under "Model", and the text "FM-25S3-120GBP3" under "Serial No.". The second row shows a checked box under "All", the text "FM-25S3-120GBP3" under "Model", and the text "G0032M7D121204000032" under "Serial No.". The green checkmark icon is highlighted with a red box.

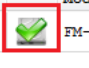
All	Model	Serial No.
<input checked="" type="checkbox"/>		FM-25S3-120GBP3
<input checked="" type="checkbox"/>	FM-25S3-120GBP3	G0032M7D121204000032

Step 6: Confirm successful update

To confirm the firmware update process is successful, please click on “Rescan For Drives” in the bottom left corner of the Firmware Update Utility. The update utility will rescan your drives and you may verify the SSD firmware version.




The screenshot shows the Phoenix III Firmware Update Tool window. At the top, there is a G.SKILL logo and the text "PHOENIX III Firmware Update Tool". Below this is a table with columns: "All", "Model", "Serial No.", "FW Rev.", "Signature", and "Capacity (GB)". The first row shows a checked box under "All", a green checkmark icon under "Model", the text "FM-25S3-120GBP3" under "Serial No.", the text "GS505" under "FW Rev.", the text "197-23299018-27082" under "Signature", and the text "111.79" under "Capacity (GB)". The green checkmark icon and the "GS505" text are highlighted with red boxes. Below the table is a section titled "Detected Drives" with a description: "List of supported drives detected on your system. Please put a check mark to the drives that you want update. Click on drive icon to see the output from the last operation." At the bottom, there are buttons: "Update Firmware...", "Rescan For Drives", "About...", and "Exit". The "Rescan For Drives" button is highlighted with a red box.

All	Model	Serial No.	FW Rev.	Signature	Capacity (GB)
<input checked="" type="checkbox"/>		FM-25S3-120GBP3	GS505	197-23299018-27082	111.79

Detected Drives
List of supported drives detected on your system. Please put a check mark to the drives that you want update. Click on drive icon to see the output from the last operation.

Update Firmware... Rescan For Drives About... Exit

“FW Rev.” should now display “GS505” for your SSD.

All	Model	Serial No.	FW Rev.	Signature	Capacity (GB)
<input checked="" type="checkbox"/>		FM-25S3-120GBP3	GS505	197-23299018-27082	111.79

Step 7: Repeat update for multiple drives

If updating firmware on multiple drives, please update one drive at a time. Please repeat Step 1 through Step 6 to update the firmware on each of your SSD drives.

Step 8: Reboot your system

After the firmware update process is complete for all drives, G.Skill recommends a system reboot. Please safely power down your system and restart your system.